

MILLIMAN REPORT

2025 Social and Human Service Programs Review: Professional and Personnel Requirements

State of Rhode Island, Office of the Health Insurance Commissioner

March 31, 2025

Ian McCulla, FSA, MAAA

John Kasey, MHA

Kaitlin Schoewe, MHA, CAPM

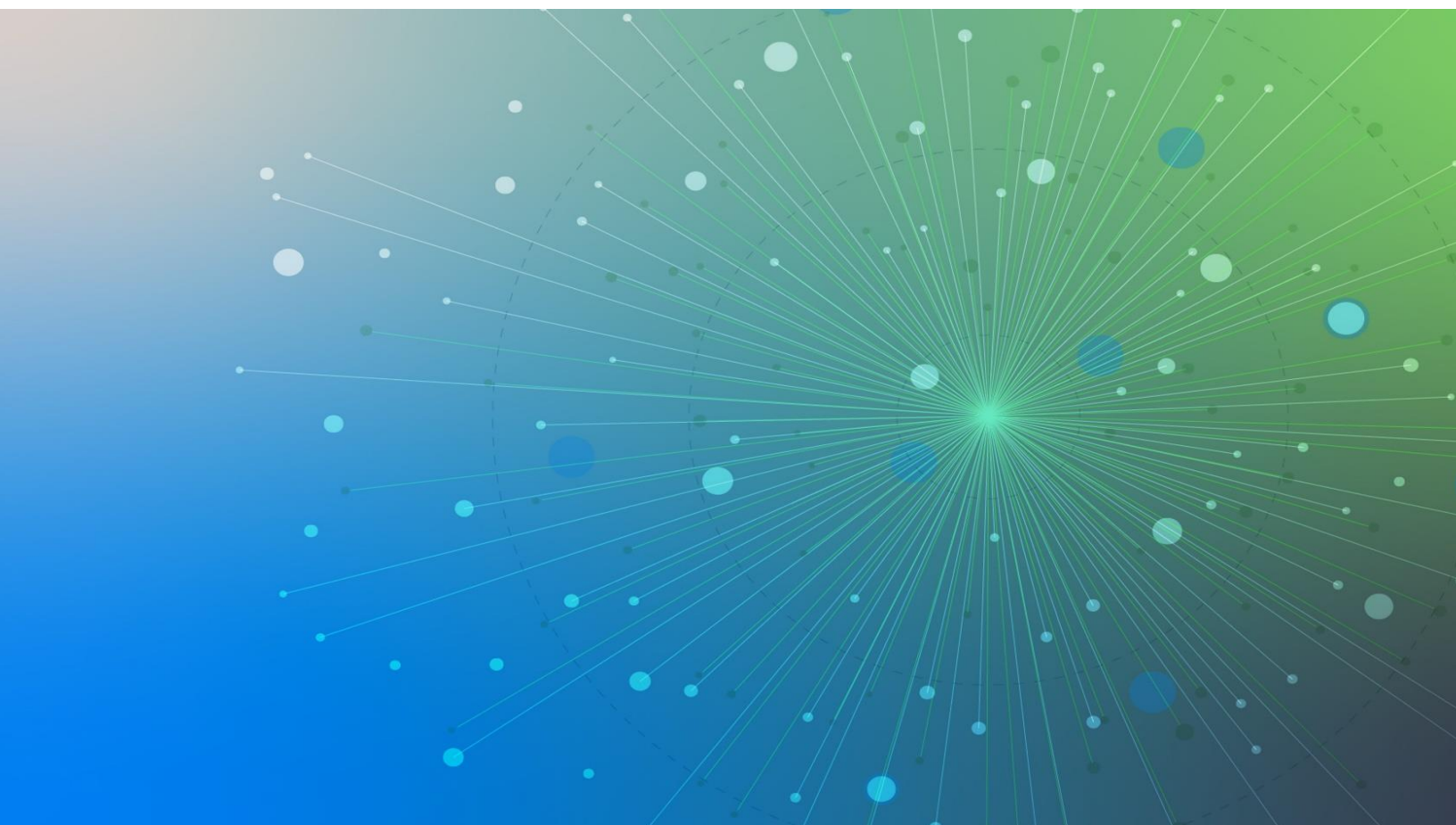


Table of Contents

| | |
|---|-----------|
| BACKGROUND | 1 |
| DESCRIPTION OF SERVICES FOR REVIEW | 2 |
| SUMMARY OF PERSONNEL REQUIREMENTS | 4 |
| PERSONNEL REQUIREMENTS DETAIL | 6 |
| CONCLUSION | 12 |
| LIMITATIONS | 13 |

Background

Milliman, Inc. (Milliman) has been retained by the State of Rhode Island Office of the Health Insurance Commissioner (OHIC) to conduct a comprehensive review of all social and human service programs having a contract with or licensed by the state, inclusive of the State of Rhode Island Executive Office of Health and Human Services (EOHHS) and the state agencies under its purview. This review is required by State of Rhode Island General Laws (RIGL) § 42-14.5-3(t). This statute requires nine assessments covering various rate and programmatic elements of the social and human service programs, with a final assessment being a culmination of the prior nine assessments. Social and human service programs include services in the following subject areas: social, mental health, developmental disability, child welfare, juvenile justice, prevention services, habilitative, rehabilitative, substance use disorder treatment, residential care, adult/adolescent day services, vocational, employment and training, and aging. As a whole, this series of reports may be used as one set of resources to provide education and insight into current Rhode Island social and human service programs' provider reimbursement and programmatic structure.

The first iteration of the Social and Human Service Programs Review was completed in 2023, culminating in the publication of OHIC's final report and rate recommendations on September 1, 2023. The mandated public meeting subsequently took place on September 22, 2023.¹ This report is part of the 2025 cycle of the review, which is scheduled to conclude with the release of OHIC's final report and rate recommendations by September 1, 2025, followed by a public meeting in September 2025.

The rate recommendations included in OHIC's final September 1, 2023, report were focused on the Medicaid program. Rhode Island largely adopted and funded OHIC's recommended rates for both the Medicaid FFS and managed care programs with an effective date of October 1, 2024. The status of the rate implementation (along with other rate initiatives) is available on the EOHHS website.²

This final report addresses RIGL § 42-14.5-3(t) task 6: "an assessment and detailed reporting on professional licensed and unlicensed personnel requirements for established rates for social and human service programs pursuant to a contract or established fee schedule." It provides insight into 16 different service offerings and the credentialing and personnel requirements for each service. In addition to supporting other benchmarking and rate development work, this report highlights the credentialing and licensure requirements which can have impacts to the cost of service, availability of providers, and quality of care provided for the services being reviewed.

The purpose of this report is to provide an introduction and overview of the service requirements generally applied for the select services. This overview may be used as a reference and may inform the development of assumptions included in rate development activities conducted as part of OHIC's broader rate review process.

¹ The reports and meeting material for the Social and Human Service Programs Review is available at <https://ohic.ri.gov/regulatory-review/social-and-human-service-programs-review>.

² For more information see <https://eohhs.ri.gov/FY25-Medicaid-Rates>

Description of Services for Review

In this report, we examine 16 services. This report establishes a common understanding of the variations in credentials and providers which render social and human services in Rhode Island. The services outlined in this report align with those that OHIC intends to use for an independent rate model (IRM) analysis. This ground-up modeling approach develops comparative rate benchmarks by relying on model inputs such as provider credentials and other information contained within this report. The details in this report will support the understanding of the services necessary to refine benchmarks to reflect the specific service delivery requirements of the Rhode Island social and human service programs.

SELECTION OF SERVICES FOR EVALUATION

As part of the comprehensive review of social and human service rates on behalf of OHIC, Milliman prioritized certain services and tasks to be included in this report. Our approach to prioritization was informed by quantitative and qualitative considerations. These considerations are described below.

Quantitative Considerations

- **Utilization.** We considered the utilization of services. In general, we prioritized services with higher utilization for review.
- **Date of Last Rate Review.** We evaluated the date at which a ground-up rate review was last performed. In the 2023 Social and Human Service Programs Review, a subset of services was selected for an IRM review. The services selected in this report were not included in the 2023 IRM review.
- **Enrollment.** Where available, we identified the number of members receiving services as a proxy for social and human service program impact. Where enrollment is higher, the service was prioritized for programmatic evaluation.
- **Data Availability.** Some services have greater variation in rates and rate structures which adds complexity to the analysis. We considered the availability of data and complexity of the rate structure when prioritizing services.

Qualitative Considerations

- **Stakeholder Feedback.** We conducted surveys for state agencies and the Social and Human Service Programs Advisory Council and relied on stakeholder feedback from the 2023 review cycle to gather an understanding of the priorities of the constituencies represented in this review.
- **Breadth of Sample.** We worked to evaluate a diverse set of services to ensure spread across the primary domains (Children's Services, Behavioral Health, home and community based services (HCBS), intellectual/developmental disabilities (I/DD)).

Taking all these considerations into account, we worked with OHIC to select services for evaluation within this report and OHIC made the final determination of which services would be included.

The following services (and associated procedure codes) were identified for analysis based upon qualitative and quantitative considerations described in this report. The personnel requirements for the following services will be covered in the next section of the report.

HOME-BASED THERAPEUTIC SERVICE CODES

- Lead therapy and clinical supervision (H0046)
- Treatment consultation and specialized treatment consultation (H2014)
- Sign language or oral interpretive services (T1013)
- Treatment coordination (T1016)
- Home-based specialized treatment and treatment support (T1024)

HOME HEALTH SERVICE CODES

- Services of home health/hospice aide in home health or hospice settings (G0156)
- Supported housing, per diem (X0043)

COMMUNITY HEALTH WORKER SERVICE CODES

- Case management, each 15 minutes (T1016)

FIRST CONNECTIONS CODES

- Prenatal intake (H1000)
- Pre- and post- natal follow up (99502)
- Post-natal intake (99501)

HEALTHY FAMILIES AMERICA CODES

- Prenatal intake (H1000)
- Post-natal intake (99501)
- Pre- and post-natal follow up (99600)

ADULT DAY CARE CODES

- Day care services, adult (S5102)

MENTAL HEALTH PSYCHIATRIC REHABILITATIVE RESIDENCES (MHPRR) SERVICE CODES

- Supportive Psychiatric Rehabilitative Apartments (H0019)

Summary of Personnel Requirements

The figure below summarizes the services, provider types, and reimbursement mechanisms for the selected Healthcare Common Procedure Coding System (HCPCS) codes for home-based therapeutic services, home health services, community health worker services, First Connections services, adult day care services, Healthy Families America services, and Mental Health Psychiatric Rehabilitative Residence (MHPRR) services.

| HCPCS CODE | CREDENTIALING REQUIREMENTS | PROFESSIONAL TYPES | CLINICAL OVERSIGHT REQUIREMENTS | UNITS OF REIMBURSEMENT |
|---|--|---|--|------------------------|
| Home-Based Therapeutic Services | | | | |
| H0046 | Background Criminal Investigation (BCI) and Child Abuse Neglect Tracking System (CANTs) Screenings; two years of supervision; continuing education | Licensed independent social worker, marriage and family therapist, mental health counselor, psychologist, and Board Certified Behavioral Analyst (BCBA) | The Executive Office of Health and Human Services (EOHHS) has oversight and the authority to conduct site visits | Per 15 Min Interval |
| H2014 | BCI and CANTs Screenings; two years of supervision; continuing education | Physical Therapists, Occupational Therapists, Speech Therapists, and other Master and Doctoral Level Clinicians | EOHHS has oversight and the authority to conduct site visits | Per 15 Min Interval |
| T1013 | National and State-level certification | Certified Healthcare Interpreters | EOHHS has oversight and the authority to conduct site visits | Per 15 Min Interval |
| T1016 | Bachelor's degree | Non-clinical | EOHHS has oversight and the authority to conduct site visits | Per 15 Min Interval |
| T1024 | BCI and CANTs Screenings; some professional experience and education | Nonclinical degree professionals | Clinical Supervision is a required; EOHHS has oversight | Per 15 Min Interval |
| Home Health Services^{3,4} | | | | |
| G0156 | Home Health Aides must hold certification from RI | Registered Nurse, Home health aides, and CNAs | Home health aide and/or CNA may require Therapist oversight | Per 15 Min Interval |
| X0043 | Completion of a state-approved training program | Certified Nursing Aide, Physical Therapist, Occupational Therapist, Speech Therapist, Registered Nurse, or Licensed Practical Nurse | Dependent on services provided | Per encounter |

³ <https://eohhs.ri.gov/providers-partners/provider-manuals-guidelines/medicaid-provider-manual/home-health/coverage#15.6>

⁴ <https://rules.sos.ri.gov/regulations/part/216-40-10-17>

| HCPCS CODE | CREDENTIALING REQUIREMENTS | PROFESSIONAL TYPES | CLINICAL OVERSIGHT REQUIREMENTS | UNITS OF REIMBURSEMENT |
|--|---|---|--|------------------------|
| Community Health Worker Services | | | | |
| T1016 | Community Health Worker training and Certification | Community Health Workers | Community Health Worker supervisors | Per 15 Min Interval |
| First Connections | | | | |
| H1000 | Dependent on services provided | Registered Nurses, Licensed Clinical Social Workers, Licensed Independent Clinical Social Workers, Licensed Marriage and Family Therapists, Certified Community Health Workers, and paraprofessionals | Programmatic oversight by the Office of Family Visiting | Per encounter |
| 99502 | Dependent on services provided | Registered Nurses, Licensed Clinical Social Workers, Licensed Independent Clinical Social Workers, Licensed Marriage and Family Therapists, Certified Community Health Workers, and paraprofessionals | Programmatic oversight by the Office of Family Visiting | Per encounter |
| 99501 | Dependent on services provided | Registered Nurses, Licensed Clinical Social Workers, Licensed Independent Clinical Social Workers, Licensed Marriage and Family Therapists, Certified Community Health Workers, and paraprofessionals | Programmatic oversight by the Office of Family Visiting | Per encounter |
| Healthy Families America (HFA) | | | | |
| H1000 | Completion of two HFA training courses | Infant Family Specialists and Infant and Early Childhood Mental Health Mentors | Supervisors are required to complete one extra training course | Per encounter |
| 99501 | Completion of two HFA training courses | Infant Family Specialists and Infant and Early Childhood Mental Health Mentors | Supervisors are required to complete one extra training course | Per encounter |
| 99600 | Completion of two HFA training courses | Infant Family Specialists and Infant and Early Childhood Mental Health Mentors | Supervisors are required to complete one extra training course | Per encounter |
| Adult Day Care | | | | |
| S5102 | CPR certification for one staff member present | Registered nurses, nurse assistants, nurse aides, therapists, nutritionists, and registered dieticians | One RN and one program director on site | Per Diem |
| Mental Health Psychiatric Rehabilitative Residences (MHPRR) | | | | |
| H0019 | Risk assessment and crisis intervention training as well as first aid and CPR | Psychiatrist, Psychiatric Clinical Nurse Specialist, mid-level practitioner, counselor, and care manager | Mid-level practitioners must be supervised by a psychiatrist | Per Diem |

Notes

1. Credentialing requirements are based upon national standards.
2. Abbreviations used in the figure above are defined in the sections that follow.

More information for each service is described in the sections that follow.

Personnel Requirements Detail

This section provides a detailed review of the professional and personnel requirements for the selected services.

HOME-BASED THERAPEUTIC SERVICES (HBTS)

Home based therapeutic services are designed to support families with children that have behavioral health, physical, or developmental disabilities in a home or community setting.⁵

LEAD THERAPY AND CLINICAL SUPERVISION (H0046)

- **Services performed and requirements.** This code is used to bill lead therapy and clinical supervision for Home-Based Therapeutic Services.⁶
- **Provider credentialing requirements.** HBTS programs require an application and certification by EOHHS.⁶ Providers must successfully pass Background Criminal Investigation (BCI) and Child Abuse Neglect Tracking System (CANTs) screenings. Clinical Supervisors must have 2 years of supervision post-degree and ongoing continued professional education⁶
- **Professional types currently providing the service.** Generally, licensed health care professionals eligible to bill for HBTS Clinical Supervision or Treatment Consultation are as follows: licensed independent social worker, marriage and family therapist, mental health counselor, psychologist, and Board Certified Behavioral Analyst (BCBA).⁶ Master and Doctoral Level Clinicians are eligible to bill the code.⁶
- **Associated clinical administrative and supervision requirements.** This code can be billed for supervision or the provision of therapy services.⁶ EOHHS has oversight and the authority to conduct site visits.
- **Reimbursement mechanism.** This service is reimbursed per 15-minute interval.

TREATMENT CONSULTATION AND SPECIALIZED TREATMENT CONSULTATION (H2014)

- **Services performed and requirements.** Treatment consultations are a part of Phase Three of HBTS services. They can be used to bring expertise and direction to the treatment team.⁶
- **Provider credentialing requirements.** Providers must successfully pass BCI and CANTs screenings. Treatment Consultants must have 2 years of supervision post-degree and ongoing continued professional education⁶
- **Professional types currently providing the service.** A physician must prescribe all therapy services. Occupational, Physical, and Speech Therapists provide Specialized Treatment Consultations. Additionally, Master and Doctoral Level Clinicians such as BCBA, licensed independent clinical social worker, licensed clinical social worker, marriage and family therapist, mental health counselor, and psychologist may provide Treatment Consultations.⁶
- **Associated clinical administrative and supervision requirements.** EOHHS has oversight and the authority to conduct site visits.⁶
- **Reimbursement mechanism.** This service is reimbursed per 15-minute interval.

SIGN LANGUAGE OR ORAL INTERPRETIVE SERVICES, PER 15 MINUTES (T1013)

- **Services performed and requirements.** This code is used to bill for Interpretation services.
- **Provider credentialing requirements.** In order to become an interpreter, a minimum of forty hours of training and a National Certification is needed from the National Board of Certification for Medical Interpreters and the Certification Commission for Healthcare Interpreters.⁷ In the state of Rhode Island, interpreters are required to

⁵ https://eohhs.ri.gov/sites/g/files/xkgbur226/files/Portals/0/Uploads/Documents/CSHCN/HBTSfactsheet_080717.pdf

⁶ <https://eohhs.ri.gov/sites/g/files/xkgbur226/files/2021-03/HBTSJuly2016.pdf>

⁷ <https://medicalinterpretingtrainingschool.com/how-to-become-a-certified-medical-interpreter/>

have a minimum of a bachelor's degree, must pass a national certification test or state-screening, and obtain a license from the Rhode Island Department of Health.⁸

- **Professional types currently providing the service.** Certified Healthcare Interpreters provide this service.⁸
- **Associated clinical administrative and supervision requirements.** EOHHS has oversight and the authority to conduct site visits.⁶
- **Reimbursement mechanism.** This service is reimbursed per 15-minute interval.

TREATMENT COORDINATION (T1016)

- **Services performed and requirements.** In performing this service, treatment coordinators work with parents, providers, and other relevant agencies to coordinate and collaborate care through the duration of HBTS services.⁶
- **Provider credentialing requirements.** The only associated qualification for this service is a Bachelor's degree.⁶
- **Professional types currently providing the service.** Treatment coordination does not require a clinical professional.⁶
- **Associated clinical administrative and supervision requirements.** EOHHS has oversight and the authority to conduct site visits.⁶
- **Reimbursement mechanism.** This service is reimbursed per 15-minute interval.

HOME-BASED SPECIALIZED TREATMENT AND TREATMENT SUPPORT (T1024)

- **Services performed and requirements.** Both services require prior authorization.
 - Specialized Treatment is intensive evidence-based intervention that may take place in the child's home, center, and/or community setting, and requires the participation of parents/guardians. The focus of this treatment is on skill development.
 - Treatment Support is targeted to facilitate a child's ability to remain at home, maintain activities of daily living, and develop social skills to participate in the community and transition into young adulthood.⁶
- **Provider credentialing requirements.** Professionals must be 19 years of age, with a high school degree and experience working with children with special needs; or have an Associate's degree in human services; or three years of experience with adults with developmental disabilities; or be enrolled in not less than 6 semester hours of relevant undergraduate coursework at an accredited college or university (Specialized Treatment); or demonstrate competency to work with children with special health care needs as evidenced by provider-agency's skills validation requirement (Treatment Support); AND successfully pass BCI and CANT screenings.⁶
- **Professional types currently providing the service.** Nonclinical professionals.⁶
- **Associated clinical administrative and supervision requirements.** Clinical Supervision is a required component of HBTS for both Specialized Treatment and Treatment Support.⁶
- **Reimbursement mechanism.** This service is reimbursed per 15-minute interval.

HOME HEALTH SERVICES

In the state of Rhode Island, Home Health providers are annually recertified by the Rhode Island Department of Health (RIDOH). The license expiration date for Home Health providers is December 31.⁹

SERVICES OF HOME HEALTH/HOSPICE AIDE IN HOME HEALTH OR HOSPICE SETTINGS, EACH 15 MINUTES (G0156)

⁸ <https://cdhh.ri.gov/interpreter-and-cart-services/asl-services/sign-language-interpreters.php#:~:text=In%20the%20state%20of%20Rhode%20Island%2C%20interpreters%20are,license%20from%20the%20Rhode%20Island%20Department%20of%20Health.>

⁹ <https://eohhs.ri.gov/providers-partners/provider-manuals-guidelines/medicaid-provider-manual/home-health/coverage#15.1>

- **Services performed and requirements.** Home Health Aides may provide personal care and assistance in the activities of daily living, e.g. helping the patient to bathe, to care for hair or teeth, to exercise and to retrain the patient in necessary self-help skills. During a particular visit, the Home Health Aide may also perform household chores which are incidental to the visit, e.g. hanging the bed, light cleaning, washing utensils, and assisting in food preparation.¹⁰
- **Provider credentialing requirements.** Home health aides must be certified by the state of Rhode Island. The Rhode Island requirements include 100 hours of training and passing the home health aide exam.¹¹
- **Professional types currently providing the service.** Home health aides and CNAs.¹⁰
- **Associated clinical administrative and supervision requirements.** If there is a need for specific types of therapy, the home health aide and/or CNA must be supervised by a therapist.¹⁰
- **Reimbursement mechanism.** This service is reimbursed per 15-minute interval.

HOME HEALTH NURSING AND THERAPY VISITS (X0043)

- **Services performed and requirements.** Skilled Nursing services and therapy services including physical therapy, occupational therapy, and speech therapy may be billed using this code.¹²
- **Provider credentialing requirements.** There are no credentialing requirements beyond professional licensure.
- **Professional types currently providing the service.** All therapy services must be prescribed by a physician and Speech Therapy performed by a licensed therapist. Nursing services must be provided by a Registered Nurse (RN) or Licensed Practical Nurse (LPN).¹²
- **Associated clinical administrative and supervision requirements.** Supervision requirements are dependent on the provider administering the service. Pregnancy-related services have various administrative documentation requirements.¹²
- **Reimbursement mechanism.** This service is reimbursed per encounter.

COMMUNITY HEALTH WORKER SERVICES

CASE MANAGEMENT, EACH 15 MINUTES (T1016)

- **Services performed and requirements.** Case managers initiate and oversee the process of assessment and reassessment of the individual's level of care and review plans of care on an annual basis and where there are significant changes in client circumstances.¹³
- **Provider credentialing requirements.** Community Health Workers must complete six months or 1000 hours of volunteer experience, fifty hours of supervised work, and 70 hours of training in order to apply for their CHW certification.¹⁴
- **Professional types currently providing the service.** Community health workers provide this service. Some alternate names that are used to describe community health workers are: peer recovery specialist, promotores de salud, coaches, lay health advisors, peer navigators.¹⁵
- **Associated clinical administrative and supervision requirements.** There are Community Health Worker supervisors, which require an additional level of training.¹⁶
- **Reimbursement mechanism.** This service is reimbursed per 15-minute interval.

¹⁰ <https://eohhs.ri.gov/providers-partners/provider-manuals-guidelines/medicaid-provider-manual/home-health/coverage>

¹¹ <https://hhacerts.com/ri/>

¹² <https://eohhs.ri.gov/providers-partners/provider-manuals-guidelines/medicaid-provider-manual/home-health/coverage>

¹³ [https://eohhs.ri.gov/sites/g/files/xkgbur226/files/2024-12/HCBS Waiver V1.11.pdf](https://eohhs.ri.gov/sites/g/files/xkgbur226/files/2024-12/HCBS%20Waiver%20V1.11.pdf)

¹⁴ <https://health.ri.gov/community-health-workers?language=en>

¹⁵ [https://eohhs.ri.gov/sites/g/files/xkgbur226/files/2025-02/CHW Manual updated 2.18.25.pdf](https://eohhs.ri.gov/sites/g/files/xkgbur226/files/2025-02/CHW%20Manual%20updated%202.18.25.pdf)

¹⁶ <https://health.ri.gov/sites/g/files/xkgbur1006/files/publications/plans/chw-roadmap.pdf>

FIRST CONNECTIONS

PRENATAL INTAKE (H1000)

- **Services performed and requirements.** First connections provides home visits to pregnant women based on need with the objective of improving health outcomes.¹⁷ This code can be billed for a prenatal intake and risk assessment. Services are provided by multiple Rhode Island non-profit agencies.¹⁸
- **Provider credentialing requirements.** Credentialing requirements are dependent on the services provided. For example, Community Health Workers providing this service require certification as a Community Health Worker.
- **Professional types currently providing the service.** Provider types that conduct home visits include: Registered Nurses, Licensed Clinical Social Workers, Licensed Independent Clinical Social Workers, Licensed Mental Health Counselors, Licensed Marriage and Family Therapists, Certified Community Health Workers, and paraprofessionals with either an associate's degree or bachelor's degree and experience serving families with infants and toddlers.¹⁹
- **Associated clinical administrative and supervision requirements.** Oversight of this program is provided by the Department of Health and the Office of Family Visiting.²⁰ Additionally, these services are provided by four Rhode Island nonprofit organizations.¹⁸
- **Reimbursement mechanism.** This service is reimbursed per encounter.

PRE- AND POST- NATAL FOLLOW UP (99502)

- **Services performed and requirements.** This service is a home visit for pre- and post-natal care. The purpose of this service is to provide pre- and post-natal care and education to new parents on how to care for the baby.²¹
- **Provider credentialing requirements.** Credentialing requirements are dependent on the services provided.
- **Professional types currently providing the service.** Provider types that conduct home visits include: Registered Nurses, Licensed Clinical Social Workers, Licensed Independent Clinical Social Workers, Licensed Mental Health Counselors, Licensed Marriage and Family Therapists, Certified Community Health Workers, and paraprofessionals with either an associate's degree or bachelor's degree and experience serving families with infants and toddlers.¹⁹
- **Associated clinical administrative and supervision requirements.** Oversight of this program is provided by the Department of Health and the Office of Family Visiting.²⁰ Additionally, these services are provided by four Rhode Island nonprofit organizations.¹⁸
- **Reimbursement mechanism.** This service is reimbursed per encounter.

POST-NATAL INTAKE (99501)

- **Services performed and requirements.** Home visit for postnatal assessment, ensuring that the mother and baby are healthy and have the resources and knowledge they need.²²
- **Provider credentialing requirements.** Credentialing requirements are dependent on the services provided.
- **Professional types currently providing the service.** Provider types that conduct home visits include: Registered Nurses, Licensed Clinical Social Workers, Licensed Independent Clinical Social Workers, Licensed Mental Health Counselors, Licensed Marriage and Family Therapists, Certified Community Health Workers, and paraprofessionals with either an associate's degree or bachelor's degree and experience serving families with infants and toddlers.¹⁹

¹⁷ <https://webserver.rilegislature.gov/BillText/BillText23/HouseText23/H5810.pdf>

¹⁸ <https://rightfromthestartri.org/wp-content/uploads/2024/02/Right-from-the-Start-First-Connections-Family-Home-Visiting-Fact-Sheet-2024.pdf>

¹⁹ https://eohhs.ri.gov/sites/g/files/xkgbur226/files/2024-06/24-00XX_Public_Notice_First_Connections_-_signed.pdf

²⁰ <https://health.ri.gov/sites/g/files/xkgbur1006/files/publications/reports/family-visiting-legislative-report-2024.pdf>

²¹ <https://www.codingahead.com/cpt-code-99502/>

²² <https://www.codingahead.com/cpt-code-99501/>

- **Associated clinical administrative and supervision requirements.** Oversight of this program is provided by the Department of Health and the Office of Family Visiting.²⁰ Additionally, these services are provided by four Rhode Island nonprofit organizations.¹⁸
- **Reimbursement mechanism.** This service is reimbursed per encounter.

HEALTHY FAMILIES AMERICA

PRENATAL INTAKE (H1000)

- **Services performed and requirements.** This code is used to conduct a home visit for a pregnant person prior to birth which has an intake assessment identifying risks to the fetus or mother.²³
- **Provider credentialing requirements.** Direct service and home visit staff complete two core training courses on foundations for family support and family resilience and opportunities for growth.²⁴
- **Professional types currently providing the service.** Infant Family Specialists and Infant and Early Childhood Mental Health Mentors perform this service in Rhode Island.²⁵
- **Associated clinical administrative and supervision requirements.** Supervisors have one supervisor training course in addition to the two core training courses.²⁴ Oversight of this program is provided by the Department of Health and the Office of Family Visiting.
- **Reimbursement mechanism.** This service is reimbursed per encounter.

HOME VISIT FOR POSTNATAL INTAKE (99501)

- **Services performed and requirements.** Providers bill this code when they perform a home visit to provide care for a postnatal mother and baby or conduct a postnatal assessment.
- **Provider credentialing requirements.** Direct service and home visit staff complete two core training courses on foundations for family support and family resilience and opportunities for growth.²⁴
- **Professional types currently providing the service.** Infant Family Specialists and Infant and Early Childhood Mental Health Mentors perform this service in Rhode Island.²⁶
- **Associated clinical administrative and supervision requirements.** Supervisors have one supervisor training course in addition to the two core training courses.²⁴ Oversight of this program is provided by the Department of Health and the Office of Family Visiting.
- **Reimbursement mechanism.** This service is reimbursed per encounter.

PRE- AND POST-NATAL FOLLOW UP (99600)

- **Services performed and requirements.** This code is used for non-assessment follow up home health services for pre- and post-natal care.
- **Provider credentialing requirements.** Direct service and home visit staff complete two core training courses on foundations for family support and family resilience and opportunities for growth.²⁴
- **Professional types currently providing the service.** Infant Family Specialists and Infant and Early Childhood Mental Health Mentors perform this service in Rhode Island.²⁶
- **Associated clinical administrative and supervision requirements.** Supervisors have one supervisor training course in addition to the two core training courses.²⁴ Oversight of this program is provided by the Department of Health and the Office of Family Visiting.
- **Reimbursement mechanism.** This service is reimbursed per encounter.

²³ <https://www.codingahead.com/hcpcs-h1000-description-billing-guidelines/>

²⁴ <https://www.healthyfamiliesamerica.org/prospective-affiliates/training-and-support-to-implement-hfa/>

²⁵ <https://www.allianceaimh.org/healthy-families-america-registry>

²⁶ <https://www.allianceaimh.org/healthy-families-america-registry>

ADULT DAY CARE

DAY CARE SERVICES, ADULT; PER DIEM (S5102)

- **Services performed and requirements.** Adult day care services include the following elements: nursing services, therapeutic services (PT, OT, ST), care management, socialization/activities, personal care services, and mental health services when indicated by a physician.²⁷
- **Provider credentialing requirements.** At least one staff member present at all times must hold a CPR certification.²⁸
- **Professional types currently providing the service.** Registered nurses, nurse assistants, or other nurse aides who have completed employee orientation typically provide these services. Additionally, therapists, nutritionists, and registered dietitians may provide adult day care services.²⁷
- **Associated clinical administrative and supervision requirements.** One registered nurse must be on site each day for a minimum of six hours. Additionally, there must be one full-time program director or someone acting in the role in their absence²⁸
- **Reimbursement mechanism.** This service is reimbursed on a per diem basis.

MENTAL HEALTH PSYCHIATRIC REHABILITATIVE RESIDENCES (MHPRR)

SUPPORTIVE PSYCHIATRIC REHABILITATIVE APARTMENTS (H0019)

- **Services performed and requirements.** This code may be billed for non-medical care in a residential treatment facility that is typically long-term.²⁹ There are three different types of Mental Health Rehabilitative Residences in Rhode Island: Basic MHPRR, a congregate licensed residential program; Specialized MHPRR, a congregate licensed residential program for populations with complex co-occurring conditions; and Enhanced MHPRR (E-MHPRR), a congregate licensed residential program with fewer beds and 24/7 services. All MHPRR types are staffed 24 hours per day.³⁰
- **Provider credentialing requirements.** Credentialing requirements are dependent on provider type. Each Behavioral Health Service Unit (BHSU) staff member must have training in risk assessment and crisis intervention services. At all times, there must be one staff member trained in basic First Aid and CPR.³¹
- **Professional types currently providing the service.** The BHSU must have either a Psychiatrist, Psychiatric Clinical Nurse Specialist, or a mid-level practitioner supervised by a psychiatrist at all times. An admissions specialist and RN are also required on site at all times. Other staff members include: counselors, care managers, and supervisors both clinical and non-clinical.³¹
- **Associated clinical administrative and supervision requirements.** Supervision requirements are dependent upon provider type.³¹ Mid-level practitioners require supervision by a psychiatrist. Programmatic oversight is done by the Rhode Island Department of Behavioral Healthcare, Developmental Disabilities & Hospitals.³²
- **Reimbursement mechanism.** These services are reimbursed on a per diem basis.

²⁷ <https://eohhs.ri.gov/sites/g/files/xkgbur226/files/2022-12/Provider%20Certification%20Standards-%20Adult%20Day%20Health-%20FINAL%20Dec%202015%20%28003%29.pdf>

²⁸ <https://rules.sos.ri.gov/regulations/part/216-40-10-7>

²⁹ <https://hcpcs.codes/h-codes/H0019/>

³⁰ Ibid.

³¹ <https://aspe.hhs.gov/sites/default/files/2021-08/StateBHCond-RhodeIsland.pdf>

³² https://rules.sos.ri.gov/Regulations/part/212-10-10-01?reg_id=12974

Conclusion

There are a range of professional types, credentials, and responsibilities across the reviewed HCPCS codes. These span from no medical or clinical credential requirements, such as case managers and home health aides, to advanced degrees in clinical fields, such as psychiatrists. The services for the selected community, home, and residential health codes can be reimbursed in time increments, per encounter, or per diem.

Limitations

The information contained in this correspondence, including any enclosures, has been prepared for the State of Rhode Island, Office of the Health Insurance Commissioner (OHIC) and their advisors. Milliman's work is prepared solely for the use and benefit of the State of Rhode Island, Office of the Health Insurance Commissioner (OHIC) in accordance with its statutory and regulatory requirements. Milliman recognizes this report will be public record subject to disclosure to third parties; however, Milliman does not intend to benefit and assumes no duty or liability to any third parties who receive Milliman's work. To the extent that the information contained in this correspondence is provided to any third parties, the correspondence should be distributed in its entirety.

In preparing this report, we relied on information available in public sources. The recommendations or analysis in this presentation do not constitute legal advice. We recommend that users of this material consult with their own legal counsel regarding interpretation of applicable laws, regulations, and requirements.

Guidelines issued by the American Academy of Actuaries require actuaries to include their professional qualifications in all actuarial communications. Ian McCulla is a member of the American Academy of Actuaries and meets the qualification standards for performing the analyses in this report.