

MILLIMAN REPORT

2025 Social and Human Service Programs Review: Utilization Trends

State of Rhode Island, Office of the Health Insurance Commissioner

December 30, 2024

Ian McCulla, FSA, MAAA, Principal and Consulting Actuary
Zach Hunt, ASA, MAAA, Consulting Actuary

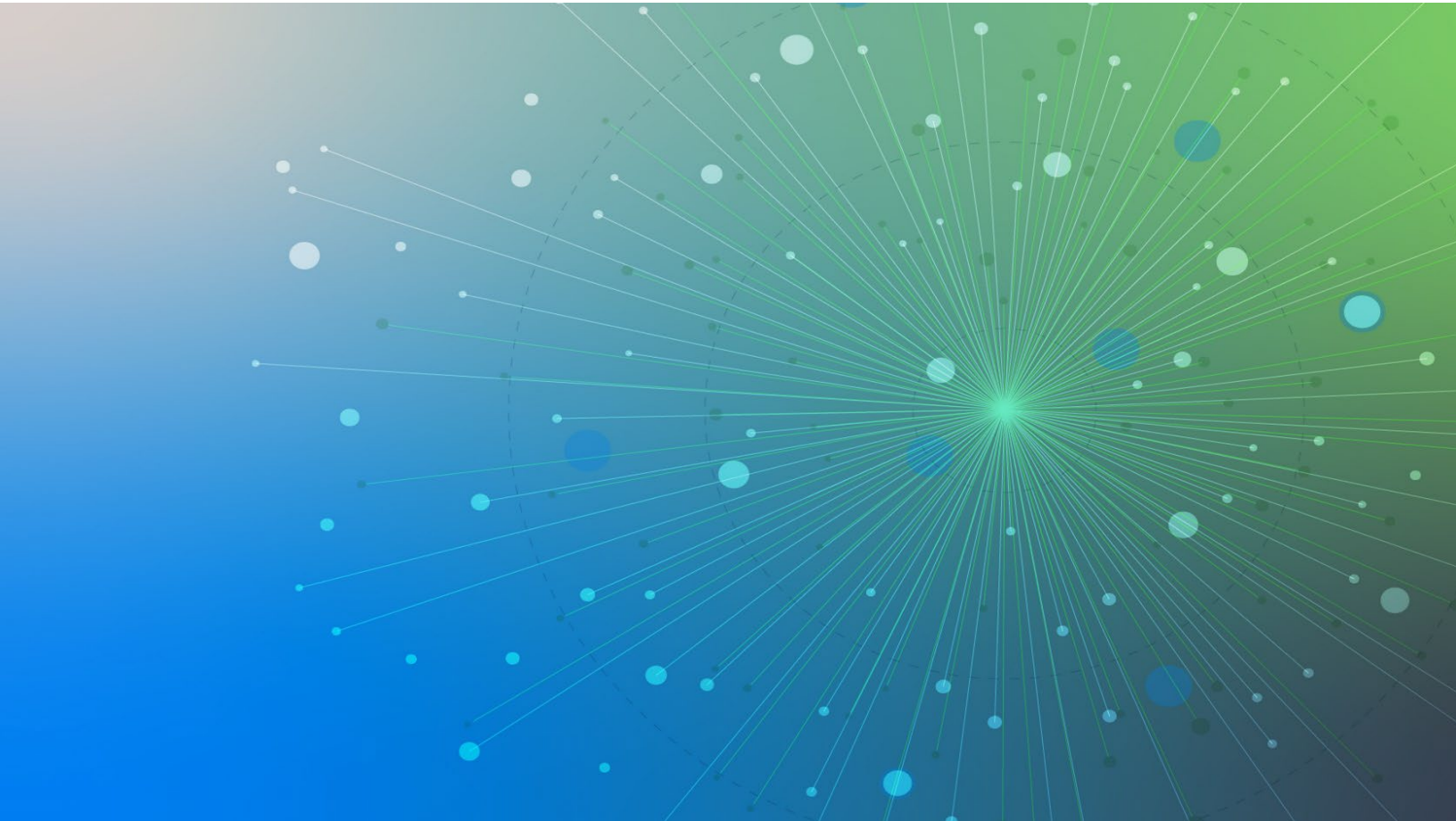




Table of Contents

BACKGROUND	1
EXECUTIVE SUMMARY	2
UTILIZATION SUMMARIES	3
METHODOLOGY	6
CONCLUSION	7
LIMITATIONS AND DATA RELIANCE	8
APPENDIX 1: AVERAGE MONTHLY UNIQUE UTILIZERS BY DETAILED SERVICE CATEGORY AND CALENDAR YEAR	
APPENDIX 2: EXPENDITURES BY DETAILED SERVICE CATEGORY AND CALENDAR YEAR	
APPENDIX 3: ENCOUNTER PROCEDURE CODES	
APPENDIX 4: RETIRED FEE-FOR-SERVICE PROCEDURE CODES	

Background

Milliman, Inc. (Milliman) has been retained by the State of Rhode Island Office of the Health Insurance Commissioner (OHIC) to conduct a comprehensive review of all social and human service programs having a contract with or licensed by the state, inclusive of the State of Rhode Island Executive Office of Health and Human Services (EOHHS) and the state agencies under its purview. This review is required by State of Rhode Island General Laws (RIGL) § 42-14.5-3(t). This statute requires nine assessments covering various rate and programmatic elements of the social and human service programs, with a final assessment being a culmination of the prior nine assessments. Social and human service programs include services in the following subject areas: social, mental health, developmental disability, child welfare, juvenile justice, prevention services, habilitative, rehabilitative, substance use disorder treatment, residential care, adult/adolescent day services, vocational, employment and training, and aging. As a whole, this series of reports may be used as one set of resources to provide education and insight into current Rhode Island social and human service programs' provider reimbursement and programmatic structure.

The first iteration of the Social and Human Service Programs Review was completed in 2023, culminating in the publication of the final report on September 1, 2023. The mandated public meeting subsequently took place on September 22, 2023¹. This report is part of the 2025 cycle of the review, which is scheduled to conclude with the release of the final report by September 1, 2025, followed by a public meeting in September 2025.

The rate recommendations included in the final September 1, 2023, report were focused on the Medicaid program. The recommended rates were largely adopted and funded by the State of Rhode Island with an effective date of October 1, 2024, and applied to both the Medicaid FFS and managed care programs. The status of the rate implementation (along with other rate initiatives) is available on the EOHHS website².

This report addresses RIGL § 42-14.5-3(t) task 3: "An assessment and detailed reporting on utilization trends from the period of January 1, 2017, through December 31, 2021." As the second review of the bi-annual cycle, the report illustrates the utilization information for calendar year (CY) 2019 through 2023 for social and human services identified in the *2025 Social and Human Service Programs Review: Reimbursement Rates* report (Reimbursement Rates Report). Data was obtained from Rhode Island's Medicaid Management Information System (MMIS).

¹ The reports and meeting material for the Social and Human Service Programs Review is available at <https://ohic.ri.gov/regulatory-review/social-and-human-service-programs-review>.

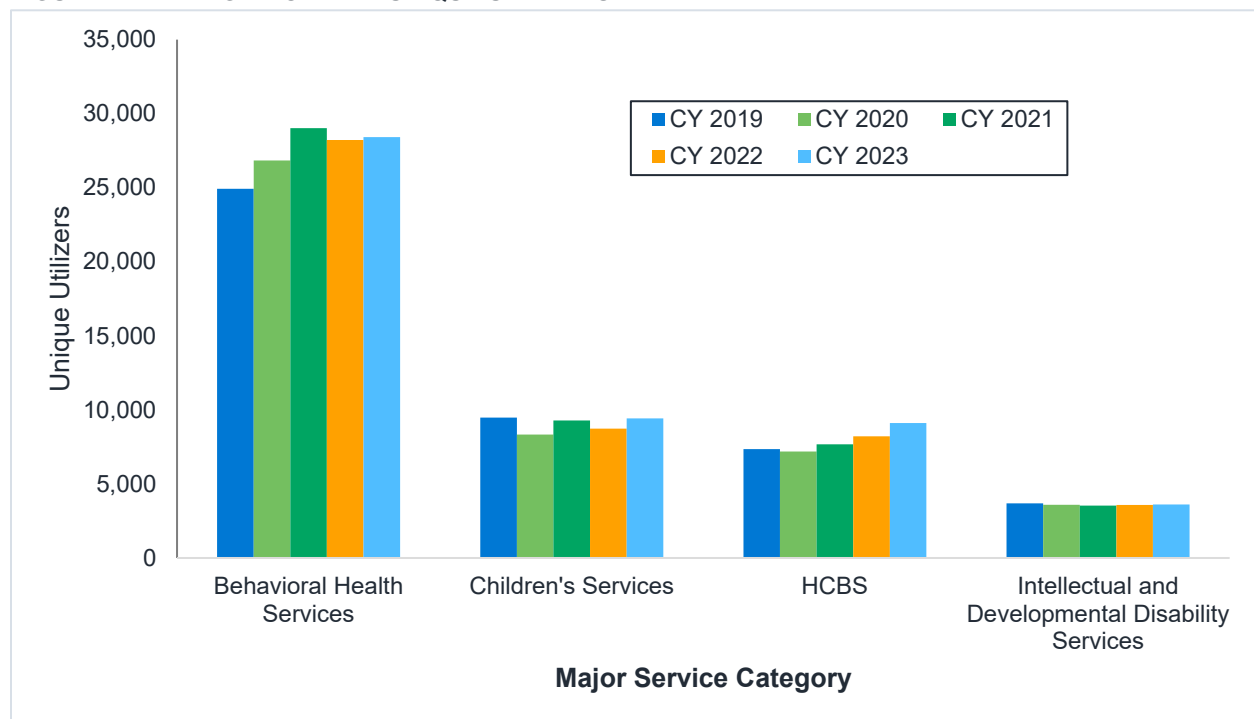
² For more information see <https://eohhs.ri.gov/FY25-Medicaid-Rates>

Executive Summary

The information contained in this report provides the state and other interested stakeholders a baseline understanding of service utilization for social and human service programs provided by Rhode Island. The service utilization contained in this report represents \$864 million in social and human service program expenditures in CY 2023. The CY 2023 expenditures, which are primarily comprised of Medicaid covered services, reflect over 45,000 average monthly program recipients. By contrast, the total Medicaid program medical expenditures were approximately \$3.3 billion in SFY 2024 and there were over 317,000 full benefit Medicaid enrollees as of September 2024.³

Figure 1 illustrates the average monthly unique utilizers of social and human service program services administered via the MMIS. Social and human service program categories illustrated in this report are consistent with the Reimbursement Rates Report and are as follows: behavioral health providers children’s services, home and community-based services (HCBS), and intellectual and developmental disability (I/DD) services.

FIGURE 1: AVERAGE MONTHLY UNIQUE UTILIZERS BY CALENDAR YEAR



Utilization reductions coinciding with the COVID-19 pandemic starting in March 2020 result in the observed overall reduction in average monthly unique utilizers for children’s services, HCBS, and I/DD services from 2019 to 2020. Utilizers of I/DD services remained relatively stable from 2020 through 2023, and utilizers of children’s services oscillated from 2020 through 2023 due to variation in utilization of local education agency (LEA), home/center-based therapeutic services (HCBTS), and early intervention services. HCBS utilizers increased from 2020 through 2023, attributable to increases in home care, self-directed, adult day, and case management services. Utilizers of behavioral health services generally increased from 2019 to 2023, with most of the year-to-year fluctuation being attributed to therapy, office visit, and assessment services.

During the COVID-19 public health emergency (PHE), states were eligible to receive enhanced federal funding if meeting maintenance of eligibility (MOE) requirements. One aspect of the MOE required states to provide continuous eligibility during the PHE, which resulted in states pausing normal Medicaid redetermination activities.

³ Rhode Island EOHHS (October 25, 2024). November 2024 CEC Testimony. Retrieved from: https://www.rilegislature.gov/Special/rcc/REC202411/10.25.24_CEC_EOHHS%20Medicaid%20Testimony.pdf pages 4 and 11

As a byproduct of this pause, Rhode Island Medicaid enrollment increased by approximately 80,000 members (27% increase) from February 2020 through June 2023. PHE disenrollment began in June 2023 with the first members being disenrolled effective July 1, 2023. Approximately 25,000 members (6.7% decrease) were disenrolled through December 31, 2023. These material enrollment shifts may contribute to the unique utilizer trends observed in Figure 1. However, growth in the overall Medicaid population may not proportionally contribute to the increase in utilization for these services, as the enrollment growth is observed to primarily be attributable to healthy adults who are not material utilizers of HCBS, I/DD, and children's services. In addition, provider capacity and workforce shortage dynamics during the PHE may affect the utilization of services. These variables are not explicitly measured in this report.

The following sections contain detailed service-level utilization metrics, utilization information stratified between the fee-for-service (FFS) claims and Medicaid managed care organization (MCO) encounters, and expenditure information where available.

Descriptions of the data summarization and redaction procedures are available in the Methodology section of this report. Additional utilization and expenditure granularity is provided in the appendices included with this report. The service category classification is consistent with the categories illustrated in the Reimbursement Rates Report.

- Appendix 1 provides average unique monthly utilizer information by calendar year, detailed service category, and delivery system (FFS/MCO).
- Appendix 2 provides annual expenditure information stratified by calendar year, detailed service category, and delivery system (FFS/MCO).
- Appendix 3 documents service codes used by the MCOs for services in the scope of this report that vary from the FFS codes for the same services.
- Appendix 4 documents FFS codes that have been discontinued but are otherwise identified to be in the scope of this review. These service codes were included in the historical claims experience included in this report.

Utilization Summaries

Rhode Island MMIS utilization metrics are illustrated at various levels of granularity in this report, including the social and human service program category, service category, and procedure code.

The following utilization metrics are contained in this report:

- **Average unique monthly utilizers.** The average unique monthly utilizers metric represents the average number of people accessing services in a month. Because multiple services may be accessed by a single person, the unique utilizers from various services cannot be aggregated to calculate a composite number. Throughout the report, the unique utilizers metric is specific to the set of services represented in the figure, and therefore the values representing a larger number of services will always be less than or equal to the sum of the unique utilizers for the individual services.
- **Annual expenditures.** The annual expenditures metric represents the total dollar value of MMIS paid claims for a particular service. While annual expenditures is not a direct utilization metric, it is a helpful metric to understand the resources allocated to the various social and human service programs. Expenditures may be aggregated across service categories, facilitating a consistent comparison of varying levels of service summarization.

Unit count metrics are not included in this report due to observed inconsistencies in unit definitions. For example, some behavioral health services are reported on a 15-minute unit basis while other similar services are reported with units representing a count of visits. We will work with state agencies as needed to provide this information for use in developing fiscal impact estimates required by RIGL § 42-14.5-3(u).

CY 2023 UTILIZATION BY SERVICE CATEGORY

Figure 2 illustrates the average unique monthly utilizers in CY 2023 for each service category stratified by the FFS and MCO populations. Behavioral health services are primarily covered by the MCOs, although certain programs still include material FFS utilization such as integrated health homes, assertive community treatment, and peer recovery services⁴. Conversely, most I/DD services are entirely covered under the FFS program⁵.

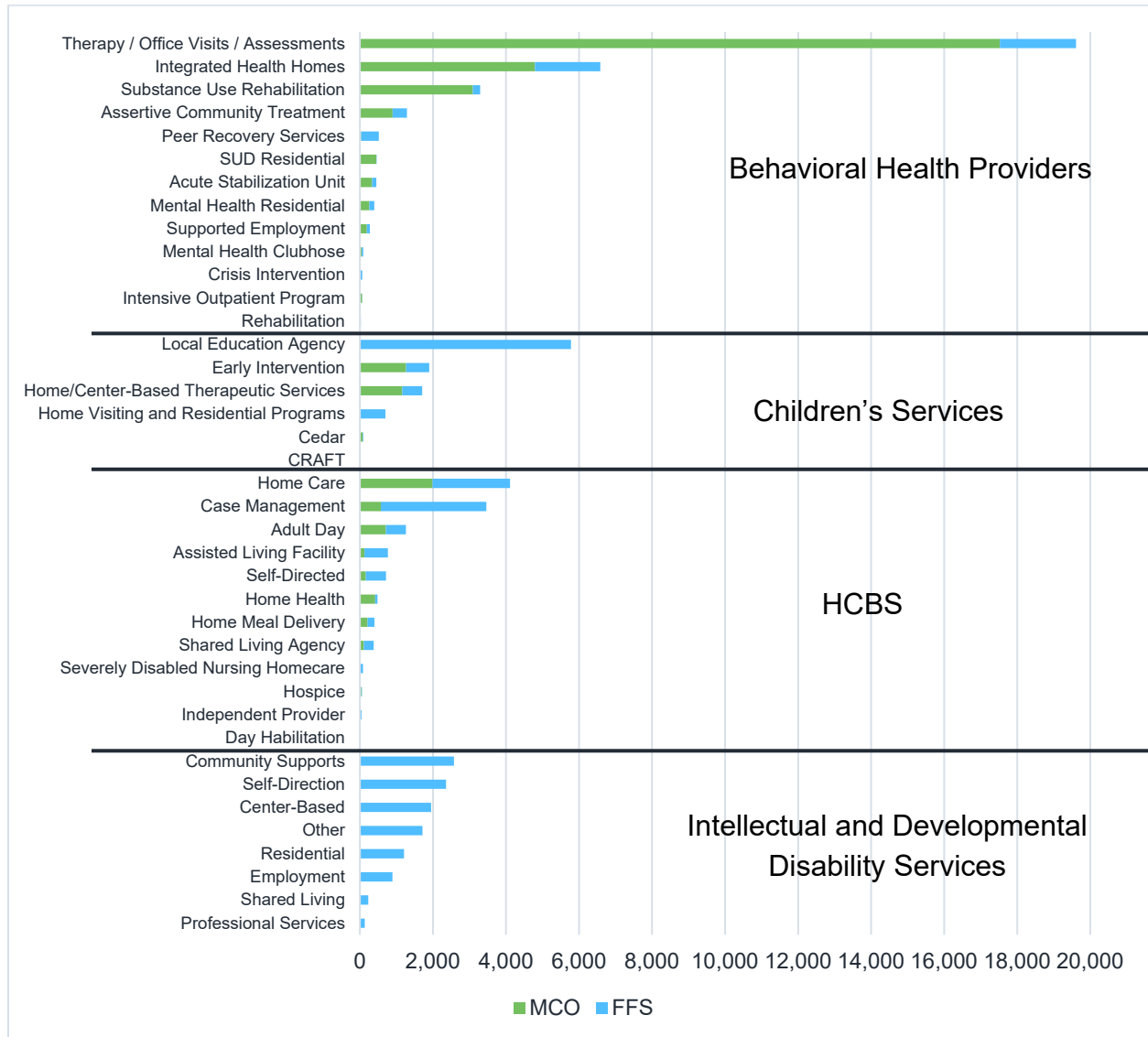
Children's services and HCBS are more evenly covered across the FFS and MCO delivery systems, with the exception of children's LEA, home visiting, and residential services that are covered through the FFS program.

⁴ FFS utilizers of behavioral health services are primarily Medicare dual-eligible members not enrolled in Medicaid managed care.

⁵ Adults receiving I/DD services via the FFS program may also receive non-I/DD services through managed care.

Approximately 7% of the FFS utilizers of in-scope children’s services are children only eligible for early intervention benefits (a limited benefit population). Over 70% of the FFS utilizers of HCBS are attributable to members dually eligible for Medicaid and Medicare coverage and not enrolled with an MCO.

FIGURE 2: CY 2023 AVERAGE MONTHLY UNIQUE UTILIZERS BY SERVICE CATEGORY



Notes:

1. Figure represents unique utilizers for each service category. To the extent a member utilized a service paid for by both the FFS program and an MCO in the same month, the member is counted once and included in the FFS allocation.
2. Self-directed services provided by the MCOs are not submitted as encounters and therefore MCO utilizers are not represented in Figure 2. Only the financial intermediary services are used to identify self-directed FFS utilizers.
3. Integrated Health Homes and Assertive Community Treatment services are being integrated into the Certified Community Behavioral health Center (CCBHC) program.
4. See the Methodology section for additional data caveats and limitations.

CY 2019 THROUGH CY 2023 UTILIZATION

Figure 3 and Figure 4 provide the average monthly unique utilizers and annual expenditures separately for the FFS and MCO delivery systems for each service category. This longitudinal view illustrates year-over-year trends for both service users and expenditures.

FIGURE 3: AVERAGE MONTHLY UNIQUE UTILIZERS BY FISCAL YEAR

Service Category	CY 2019 Utilizers	CY 2020 Utilizers	CY 2021 Utilizers	CY 2022 Utilizers	CY 2023 Utilizers	CY 2019-2020 % Change	CY 2020-2021 % Change	CY 2021-2022 % Change	CY 2022-2023 % Change
Behavioral Health Providers									
FFS	3,485	3,572	3,692	3,801	4,425	2.5%	3.3%	2.9%	16.4%
MCO	21,540	23,398	25,482	24,592	24,345	8.6%	8.9%	(3.5%)	(1.0%)
Composite	24,931	26,838	29,026	28,224	28,416	7.6%	8.2%	(2.8%)	0.7%
Children's Services									
FFS	6,774	5,683	6,810	6,833	7,462	(16.1%)	19.8%	0.3%	9.2%
MCO	3,228	3,059	2,947	2,336	2,456	(5.2%)	(3.7%)	(20.7%)	5.2%
Composite	9,475	8,337	9,286	8,735	9,421	(12.0%)	11.4%	(5.9%)	7.8%
HCBS									
FFS	3,725	3,937	4,231	4,684	5,521	5.7%	7.5%	10.7%	17.9%
MCO	3,691	3,313	3,523	3,644	3,790	(10.3%)	6.3%	3.4%	4.0%
Composite	7,346	7,184	7,672	8,213	9,117	(2.2%)	6.8%	7.1%	11.0%
Intellectual and Developmental Disability Services									
FFS	3,692	3,591	3,538	3,578	3,615	(2.7%)	(1.5%)	1.1%	1.0%
MCO	-	-	-	-	-	N/A	N/A	N/A	N/A
Composite	3,692	3,591	3,538	3,578	3,615	(2.7%)	(1.5%)	1.1%	1.0%

Notes:

- Members receiving FFS and MCO services are not mutually exclusive. Total unique utilizers are less than the sum of FFS and MCO unique utilizers.
- See the Methodology section for additional data caveats and limitations.

FIGURE 4: ANNUAL EXPENDITURE BY FISCAL YEAR

Service Category	CY 2019 (\$Millions)	CY 2020 (\$Millions)	CY 2021 (\$Millions)	CY 2022 (\$Millions)	CY 2023 (\$Millions)	CY 2019-2020 % Change	CY 2020-2021 % Change	CY 2021-2022 % Change	CY 2022-2023 % Change
Behavioral Health Providers									
FFS	\$ 26.3	\$ 28.8	\$ 31.7	\$ 37.5	\$ 30.2	9.2%	10.3%	18.2%	(19.6%)
MCO	129.8	138.1	150.0	159.4	167.6	6.4%	8.6%	6.3%	5.2%
Total	\$ 156.1	\$ 166.8	\$ 181.7	\$ 196.9	\$ 197.8	6.9%	8.9%	8.3%	0.4%
Children's Services									
FFS	\$ 38.2	\$ 28.0	\$ 38.7	\$ 35.0	\$ 46.8	(26.8%)	38.4%	(9.5%)	33.5%
MCO	31.4	25.3	28.3	37.7	53.8	(19.3%)	11.9%	33.0%	42.7%
Total	\$ 69.6	\$ 53.3	\$ 67.0	\$ 72.7	\$ 100.5	(23.4%)	25.8%	8.5%	38.3%
HCBS									
FFS	\$ 57.7	\$ 69.7	\$ 89.6	\$ 113.8	\$ 121.5	20.9%	28.5%	27.0%	6.8%
MCO	55.9	55.2	59.6	67.6	83.9	(1.2%)	7.9%	13.5%	24.0%
Total	\$ 113.6	\$ 124.9	\$ 149.2	\$ 181.4	\$ 205.4	10.0%	19.4%	21.6%	13.2%
Intellectual and Developmental Disability Services									
FFS	\$ 234.0	\$ 231.4	\$ 257.6	\$ 301.7	\$ 360.0	(1.1%)	11.3%	17.1%	19.3%
MCO	0.0	0.0	0.0	0.0	0.0	N/A	N/A	N/A	N/A
Total	\$ 234.0	\$ 231.4	\$ 257.6	\$ 301.7	\$ 360.0	(1.1%)	11.3%	17.1%	19.3%

Notes:

- See the Methodology section for additional data caveats and limitations.
- The FFS expenditures include temporary enhanced rate funding for American Rescue Plan Act (ARPA) workforce development initiatives, affecting children's services with dates of service between May 1, 2021, and July 31, 2021, and behavioral health and HCBS services between November 1, 2021, and March 31, 2022.⁶

⁶ The fee schedule rates and effective dates may be found at <https://providersearch.rproviderportal.org/ProviderSearchEOHHS/FFSFeeSchedule.aspx>

Behavioral health service expenditures increased consistently from 2019 to 2023, with the dampened increase in 2023 being influenced by the end of the enhanced behavioral health FFS fee schedule on March 31, 2022. The average monthly utilization of behavioral health services likewise increased each year in composite across the FFS and managed care programs except in 2022, attributable to a reduction in the behavioral health utilization in the managed care program.

Unique utilizers of children's health services oscillated from 2019 to 2023 in both the FFS and managed care program before increasing in 2023. LEA utilization is a major driver of growth for FFS in 2021. It is possible the utilization and expenditure increase in 2023 is influenced by investments in provider reimbursement of children's services in recent years, such as a 45% reimbursement increase for early intervention services on July 1, 2022.

Unique utilizers of HCBS decreased from 2019 to 2020, coinciding with the COVID-19 pandemic, and increased from 2020 through 2023. Rhode Island implemented HCBS provider reimbursement increases using both temporary ARPA FFS rate increases from November 1, 2021, through March 31, 2022, and targeted increases such as an 11.5% home care reimbursement rate increase on July 1, 2022.

The changes in unique utilizers from 2019 through 2023 of intellectual and developmental disability services is moderated relative to the other services given the more stable number of Medicaid enrollees for this population. Annual expenditure volume for these services is influenced by the Department of Behavioral Healthcare, Developmental Disabilities, and Hospitals rate and payment methodology review project, which evaluated and implemented new rate and payment methodologies.⁷

Appendix 1 and Appendix 2 provide similar information as that presented in Figure 3 and Figure 4, respectively, at a detailed service category level.

Methodology

This report provides an analysis of utilization and expenditure information from 2019 through 2023. This section outlines the data, service category logic, and data redaction methodologies underlying this report.

DATA

We used FFS claims and MCO encounters contained in the MMIS data provided by EOHHS on November 15, 2024, as the primary data sources for the analysis of 2019 through 2023. ARPA workforce development funding distributed through FFS claims payments are included in the paid amounts illustrated in this report.

The MCO encounter data consists of encounters from the Medicaid managed care program covering RIte Care children and adults, Children with Special Healthcare Needs, and Rhody Health Partners populations, as well as MMP encounters. Known limitations with the MCO encounter data include missing data and the lack of program indicator information, which influences the assignment of service category. Recent data quality reporting indicates the encounter data is generally between 96% and 100% complete, but this completion percentage can vary by time period, MCO, and type of service. The missing MCO encounters represent services provided by the MCOs that are not accepted into the state's encounter data warehouse. We did not include an adjustment for missing encounter data in this report. The MCO encounter service category assignment is discussed in more detail in the Service Category Logic section.

SERVICE CATEGORY LOGIC

The services reviewed in this report are consistent with the scope of services outlined in the Reimbursement Rates Report. Certain procedure codes have been retired within the Gainwell fee schedule and have been replaced by other procedure codes. While these retired codes are not part of our rate review process, they have been included in the calculation of expenditures and utilizers for purposes of continuity year-over-year. These services are cataloged in Appendix 4.

⁷ Rhode Island Department of Behavioral Healthcare, Developmental Disabilities, and Hospitals. *Rate and Payment Methodology Review Project*. Retrieved December 12, 2024, from <https://bhddh.ri.gov/developmental-disabilities/initiatives/rate-and-payment-methodology-review-project>

The categorization of claims and encounter data to a service category is consistent with the major and detailed service categories used in the Reimbursement Rates report. Program indicator is a key field for the categorization of the FFS claims, but this field is not consistently populated on the encounter data. Given this data limitation, we used the following hierarchical steps to assign a program that aligns best with the type of encounter claim and the provider of the claim:

1. Limit MCO encounters to procedure codes that exist in Appendix 1 of the Reimbursement Rates Report.
2. If a procedure code/modifier combination appears only under a single program in the FFS program, any encounter data with that procedure code/modifier is assigned that same program.
3. If a procedure code appears only under a single program in the FFS program, any encounter data with that procedure code is assigned that same program.
4. Assign the program that corresponds to the FFS program with a matching National Provider Identifier (NPI) and procedure code with the most FFS expenditures in 2023.
5. Assign the program that corresponds to the program with a matching Federal Employer Identification Number (FEIN) and procedure code with the most FFS expenditures in 2023.
6. Once a program is assigned, the corresponding major and detailed service categories are attributed to the encounter claim allowing for comparison to FFS data.

This methodology was performed to improve the accuracy and robustness of the MCO encounter data provider type to better reflect the scope of services provided in the Medicaid managed care program. This process is inherently unable to address all potential issues with the MCO encounter data. We relied upon the FFS and encounter data received and accepted it without audit. To the extent that there remain other data inconsistencies, errors, or omissions, the values provided in this report may likewise be inaccurate or incomplete.

Conclusion

The delivery of social and human service programs in Rhode Island varies by service and population, with behavioral services primarily covered by Medicaid MCOs, I/DD services being covered in the FFS program, and children's services and HCBS being covered by a combination of the two. While behavioral health services are the highest utilized social and human service reviewed in this report, with approximately 28,000 average monthly Medicaid recipients in 2023, the highest expenditure volume is associated with I/DD services. This report helps identify the number of Medicaid members and volume of Medicaid expenditures that may be influenced by any changes proposed to social and human service programs. In addition, this report and the underlying data may be utilized to support Rhode Island state agencies in developing the fiscal impact estimates required by RIGL § 42-14.5-3(u) based on OHIC rate recommendations.

Limitations and Data Reliance

The information contained in this correspondence, including any enclosures, has been prepared for the State of Rhode Island, Office of the Health Insurance Commissioner (OHIC) and their advisors. Milliman's work is prepared solely for the use and benefit of the State of Rhode Island, Office of the Health Insurance Commissioner (OHIC) in accordance with its statutory and regulatory requirements. Milliman recognizes this report will be public record subject to disclosure to third parties; however, Milliman does not intend to benefit and assumes no duty or liability to any third parties who receive Milliman's work. To the extent that the information contained in this correspondence is provided to any third parties, the correspondence should be distributed in its entirety.

Milliman has developed certain models to estimate the values included in this correspondence. The intent of the models was to summarize Medicaid fee-for-service and managed care expenditures and utilization for 2019 through 2023 to understand the trends and patterns for services subject to the social and human service programs review. We have reviewed the models, including their inputs, calculations, and outputs for consistency, reasonableness, and appropriateness to the intended purpose and in compliance with generally accepted actuarial practice and relevant actuarial standards of practice (ASOP). The models rely on data and information as input to the models. We have relied upon certain data and information provided by OHIC for this purpose and accepted it without audit. To the extent that the data and information provided is not accurate, or is not complete, the values provided in this correspondence may likewise be inaccurate or incomplete. Milliman's data and information reliance includes the sources discussed in this correspondence. The models, including all input, calculations, and output may not be appropriate for any other purpose.

Guidelines issued by the American Academy of Actuaries require actuaries to include their professional qualifications in all actuarial communications. Ian McCulla and Zach Hunt are members of the American Academy of Actuaries and meet the qualification standards for performing the analyses in this report.

Appendix 1: Average Monthly Unique Utilizers by Detailed Service
Category and Calendar Year

State of Rhode Island
Office of the Health Insurance Commissioner
2025 Social and Human Service Programs Rate Review
Appendix 1
Average Monthly Unique Utilizers CY 2019 - CY 2020

Service Category	CY 2019				CY 2020			
	MCO	FFS	Composite	% FFS	MCO	FFS	Composite	% FFS
Behavioral Health Services								
Acute Stabilization Unit	521	28	549	5.1%	381	103	471	21.9%
Assertive Community Treatment	731	310	1,041	29.8%	837	372	1,209	30.8%
Integrated Health Homes	4,651	1,467	6,114	24.0%	4,801	1,644	6,445	25.5%
Crisis Intervention	18	68	86	79.1%	14	50	63	79.4%
Intensive Outpatient Programs	40	6	46	13.0%	26	5	31	16.1%
Mental Health Clubhouse	65	49	114	43.0%	47	46	92	50.0%
Mental Health Residential	231	144	374	38.5%	221	165	385	42.9%
Peer Recovery Services	296	7	302	2.3%	236	92	321	28.7%
Rehabilitation	7	14	20	70.0%	5	16	21	76.2%
Substance Use Rehabilitation	3,364	458	3,797	12.1%	3,381	315	3,681	8.6%
SUD Residential	61	14	74	18.9%	93	10	103	9.7%
Supported Employment	218	83	301	27.6%	203	82	284	28.9%
Therapy / Office Visits / Assessments	15,466	1,878	17,310	10.8%	16,999	1,713	18,690	9.2%
Behavioral Health Services - Composite	21,540	3,485	24,931	14.0%	23,398	3,572	26,838	13.3%
Children's Services								
Cedar	22	6	28	21.4%	27	5	32	15.6%
CRAFT	-	16	16	100.0%	-	17	17	100.0%
Early Intervention	1,905	687	2,574	26.7%	1,680	639	2,310	27.7%
Home Visiting and Residential Programs	-	421	421	100.0%	-	467	467	100.0%
Home/Center-Based Therapeutic Services	1,458	771	2,214	34.8%	1,478	654	2,125	30.8%
Local Education Agency	-	5,209	5,209	100.0%	-	4,152	4,152	100.0%
Children's Services - Composite	3,228	6,774	9,475	71.5%	3,059	5,683	8,337	68.2%
HCBS								
Adult Day	790	562	1,350	41.6%	316	237	553	42.9%
Assisted Living Facility	244	392	635	61.7%	215	440	654	67.3%
Case Management	808	1,505	2,301	65.4%	761	1,698	2,454	69.2%
Day Habilitation	4	5	9	55.6%	4	4	8	50.0%
Home Care	1,746	1,559	3,304	47.2%	1,840	1,889	3,725	50.7%
Home Health	623	73	694	10.5%	512	74	584	12.7%
Home Meal Delivery	83	99	181	54.7%	83	127	210	60.5%
Hospice	39	24	64	37.5%	53	26	78	33.3%
Independent Provider	-	-	-	-	-	1	1	100.0%
Self-Directed	-	303	303	100.0%	-	329	329	100.0%
Severely Disabled Nursing Homecare	14	76	90	84.4%	11	69	80	86.3%
Shared Living Agency	84	120	203	59.1%	73	155	228	68.0%
HCBS - Composite	3,691	3,725	7,346	50.7%	3,313	3,937	7,184	54.8%
Intellectual and Developmental Disability Services								
Center-Based	-	3,088	3,088	100.0%	-	2,516	2,516	100.0%
Community Supports	-	1,828	1,828	100.0%	-	1,617	1,617	100.0%
Employment	-	1,054	1,054	100.0%	-	714	714	100.0%
Professional Services	-	-	-	-	-	-	-	-
Residential	-	1,440	1,440	100.0%	-	1,432	1,432	100.0%
Self-Direction	-	3,527	3,527	100.0%	-	3,466	3,466	100.0%
Shared Living	-	143	143	100.0%	-	90	90	100.0%
Other	-	2,165	2,165	100.0%	-	1,380	1,380	100.0%
I/DD - Composite	-	3,692	3,692	100.0%	-	3,591	3,591	100.0%

Notes:

- Utilizers between detailed service categories are not mutually exclusive.
- Certain day programs provided by BHDDH for community-based services may be included with center-based day services due to transitioning of T2021 codes in the BHDDH fee schedule.
- See the Methodology section of attached report for additional data caveats and limitations.
- The Self-Directed FFS values were updated on January 3, 2025.
- Values have been rounded to the nearest integer.

State of Rhode Island
Office of the Health Insurance Commissioner
2025 Social and Human Service Programs Rate Review
Appendix 1
Average Monthly Unique Utilizers CY 2021 - CY 2023

Service Category	CY 2021				CY 2022				CY 2023			
	MCO	FFS	Composite	% FFS	MCO	FFS	Composite	% FFS	MCO	FFS	Composite	% FFS
Behavioral Health Services												
Acute Stabilization Unit	418	107	510	21.0%	419	112	519	21.6%	344	117	450	26.0%
Assertive Community Treatment	919	402	1,320	30.5%	938	393	1,331	29.5%	895	392	1,287	30.5%
Integrated Health Homes	5,056	1,682	6,737	25.0%	4,941	1,716	6,656	25.8%	4,794	1,791	6,584	27.2%
Crisis Intervention	17	51	68	75.0%	15	49	63	77.8%	20	44	64	68.8%
Intensive Outpatient Programs	51	5	57	8.8%	66	2	68	2.9%	59	1	60	1.7%
Mental Health Clubhouse	48	43	90	47.8%	51	40	90	44.4%	55	38	92	41.3%
Mental Health Residential	240	155	394	39.3%	253	146	398	36.7%	260	133	392	33.9%
Peer Recovery Services	40	143	183	78.1%	56	138	192	71.9%	32	486	517	94.0%
Rehabilitation	4	17	21	81.0%	1	22	24	91.7%	1	25	26	96.2%
Substance Use Rehabilitation	3,521	193	3,710	5.2%	3,345	173	3,514	4.9%	3,100	198	3,292	6.0%
SUD Residential	211	7	218	3.2%	394	6	400	1.5%	449	8	457	1.8%
Supported Employment	231	96	327	29.4%	172	70	242	28.9%	190	82	272	30.1%
Therapy / Office Visits / Assessments	18,815	1,724	20,514	8.4%	17,564	1,801	19,321	9.3%	17,573	2,082	19,608	10.6%
Behavioral Health Services - Composite	25,482	3,692	29,026	12.7%	24,592	3,801	28,224	13.5%	24,345	4,425	28,416	15.6%
Children's Services												
Cedar	27	6	33	18.2%	35	5	40	12.5%	78	16	94	17.0%
CRAFT	-	17	17	100.0%	-	17	17	100.0%	-	21	21	100.0%
Early Intervention	1,641	685	2,313	29.6%	1,201	633	1,797	35.2%	1,300	636	1,898	33.5%
Home Visiting and Residential Programs	-	449	449	100.0%	-	345	345	100.0%	-	699	699	100.0%
Home/Center-Based Therapeutic Services	1,382	624	1,999	31.2%	1,193	575	1,761	32.7%	1,163	546	1,706	32.0%
Local Education Agency	-	5,308	5,308	100.0%	-	5,517	5,517	100.0%	-	5,782	5,782	100.0%
Children's Services - Composite	2,947	6,810	9,286	73.3%	2,336	6,833	8,735	78.2%	2,456	7,462	9,421	79.2%
HCBS												
Adult Day	482	351	833	42.1%	625	470	1,094	43.0%	711	549	1,258	43.6%
Assisted Living Facility	177	493	670	73.6%	132	589	721	81.7%	125	640	765	83.7%
Case Management	889	1,986	2,859	69.5%	824	2,259	3,062	73.8%	601	2,887	3,462	83.4%
Day Habilitation	5	5	10	50.0%	5	4	9	44.4%	4	4	8	50.0%
Home Care	1,801	1,893	3,691	51.3%	1,843	1,924	3,761	51.2%	2,000	2,122	4,111	51.6%
Home Health	508	90	598	15.1%	494	77	571	13.5%	421	61	481	12.7%
Home Meal Delivery	86	153	239	64.0%	162	164	325	50.5%	209	189	398	47.5%
Hospice	52	24	77	31.2%	48	22	70	31.4%	39	16	55	29.1%
Independent Provider	-	50	50	100.0%	-	68	68	100.0%	-	44	44	100.0%
Self-Directed	-	349	349	100.0%	-	430	430	100.0%	161	552	714	77.3%
Severely Disabled Nursing Homecare	9	72	82	87.8%	12	73	85	85.9%	19	68	87	78.2%
Shared Living Agency	75	191	265	72.1%	85	244	329	74.2%	107	271	379	71.5%
HCBS - Composite	3,523	4,231	7,672	55.1%	3,644	4,684	8,213	57.0%	3,790	5,521	9,117	60.6%
Intellectual and Developmental Disability Services												
Center-Based	-	2,490	2,490	100.0%	-	2,638	2,638	100.0%	-	1,948	1,948	100.0%
Community Supports	-	1,683	1,683	100.0%	-	1,785	1,785	100.0%	-	2,574	2,574	100.0%
Employment	-	709	709	100.0%	-	764	764	100.0%	-	892	892	100.0%
Professional Services	-	-	-	-	-	-	-	-	-	134	134	100.0%
Residential	-	1,437	1,437	100.0%	-	1,428	1,428	100.0%	-	1,208	1,208	100.0%
Self-Direction	-	3,422	3,422	100.0%	-	3,470	3,470	100.0%	-	2,361	2,361	100.0%
Shared Living	-	108	108	100.0%	-	121	121	100.0%	-	228	228	100.0%
Other	-	1,451	1,451	100.0%	-	1,595	1,595	100.0%	-	1,714	1,714	100.0%
I/DD - Composite	-	3,538	3,538	100.0%	-	3,578	3,578	100.0%	-	3,615	3,615	100.0%

Notes:

- Utilizers between detailed service categories are not mutually exclusive.
- Certain day programs provided by BHDDH for community-based services may be included with center-based day services due to transitioning of T2021 codes in the BHDDH fee schedule.
- See the Methodology section of attached report for additional data caveats and limitations.
- The Self-Directed FFS values were updated on January 3, 2025.
- Values have been rounded to the nearest integer.

Appendix 2: Expenditures by Detailed Service Category and Calendar
Year

State of Rhode Island
Office of the Health Insurance Commissioner
2025 Social and Human Service Programs Rate Review
Appendix 2
Annual Expenditures CY 2019 - CY 2020

Service Category	CY 2019				CY 2020			
	MCO	FFS	Composite	% FFS	MCO	FFS	Composite	% FFS
Behavioral Health Services								
Acute Stabilization Unit	\$ 1,907,682	\$ 704,445	\$ 2,612,127	27.0%	\$ 1,526,968	\$ 1,310,742	\$ 2,837,709	46.2%
Assertive Community Treatment	10,738,887	4,560,174	15,299,062	29.8%	12,381,641	5,532,202	17,913,843	30.9%
Integrated Health Homes	23,013,313	7,303,400	30,316,713	24.1%	23,968,459	8,233,514	32,201,973	25.6%
Crisis Intervention	32,573	123,383	155,955	79.1%	31,143	61,885	93,027	66.5%
Intensive Outpatient Programs	340,412	29,738	370,150	8.0%	262,201	25,158	287,359	8.8%
Mental Health Clubhouse	317,535	226,850	544,385	41.7%	193,100	183,700	376,800	48.8%
Mental Health Residential	9,921,897	6,207,070	16,128,967	38.5%	9,811,146	7,159,030	16,970,176	42.2%
Peer Recovery Services	335,125	3,434	338,558	1.0%	253,348	103,952	357,300	29.1%
Rehabilitation	949,583	2,380,845	3,330,428	71.5%	753,753	2,836,708	3,590,461	79.0%
Substance Use Rehabilitation	20,848,416	2,489,292	23,337,709	10.7%	20,887,798	1,350,841	22,238,639	6.1%
SUD Residential	8,967,793	366,851	9,334,644	3.9%	13,769,066	196,999	13,966,065	1.4%
Supported Employment	596,707	269,280	865,987	31.1%	358,743	221,928	580,671	38.2%
Therapy / Office Visits / Assessments	51,794,398	1,681,523	53,475,921	3.1%	53,853,207	1,564,330	55,417,537	2.8%
Behavioral Health Services - Composite	\$ 129,764,321	\$ 26,346,284	\$ 156,110,605	16.9%	\$ 138,050,573	\$ 28,780,987	\$ 166,831,560	17.3%
Children's Services								
Cedar	\$ 233,182	\$ 63,957	\$ 297,140	21.5%	\$ 284,693	\$ 57,600	\$ 342,293	16.8%
CRAFT	-	3,044,504	3,044,504	100.0%	-	2,943,322	2,943,322	100.0%
Early Intervention	9,144,279	3,335,356	12,479,635	26.7%	6,773,628	3,121,129	9,894,757	31.5%
Home Visiting and Residential Programs	-	7,217,629	7,217,629	100.0%	-	6,650,326	6,650,326	100.0%
Home/Center-Based Therapeutic Services	22,002,258	12,084,501	34,086,759	35.5%	18,267,350	8,653,562	26,920,911	32.1%
Local Education Agency	-	12,468,044	12,468,044	100.0%	-	6,544,571	6,544,571	100.0%
Children's Services - Composite	\$ 31,379,719	\$ 38,213,992	\$ 69,593,711	54.9%	\$ 25,325,671	\$ 27,970,510	\$ 53,296,182	52.5%
HCBS								
Adult Day	\$ 8,838,148	\$ 5,858,894	\$ 14,697,042	39.9%	\$ 3,202,192	\$ 2,236,685	\$ 5,438,877	41.1%
Assisted Living Facility	5,183,218	7,016,557	12,199,775	57.5%	4,667,340	8,942,626	13,609,966	65.7%
Case Management	1,237,413	2,210,024	3,447,437	64.1%	1,152,247	2,229,527	3,381,773	65.9%
Day Habilitation	286,319	388,474	674,794	57.6%	338,035	338,152	676,187	50.0%
Home Care	30,815,183	31,934,363	62,749,546	50.9%	36,868,625	42,982,966	79,851,591	53.8%
Home Health	4,534,860	391,845	4,926,704	8.0%	3,828,919	754,877	4,583,796	16.5%
Home Meal Delivery	123,220	159,780	283,000	56.5%	137,449	198,852	336,301	59.1%
Hospice	1,453,326	635,314	2,088,640	30.4%	1,560,876	1,556,653	3,117,529	49.9%
Independent Provider	-	-	-	-	-	13,339	13,339	100.0%
Self-Directed	-	863,771	863,771	100.0%	-	976,651	976,651	100.0%
Severely Disabled Nursing Homecare	2,158,363	5,567,716	7,726,079	72.1%	2,220,789	5,609,675	7,830,464	71.6%
Shared Living Agency	1,277,433	2,630,554	3,907,987	67.3%	1,236,536	3,859,308	5,095,844	75.7%
HCBS - Composite	\$ 55,907,483	\$ 57,657,292	\$ 113,564,775	50.8%	\$ 55,213,007	\$ 69,699,311	\$ 124,912,318	55.8%
Intellectual and Developmental Disability Services								
Center-Based	\$ 0	\$ 59,502,578	\$ 59,502,578	100.0%	\$ 0	\$ 55,289,895	\$ 55,289,895	100.0%
Community Supports	-	32,939,782	32,939,782	100.0%	-	32,492,742	32,492,742	100.0%
Employment	-	6,367,354	6,367,354	100.0%	-	4,418,384	4,418,384	100.0%
Professional Services	-	-	-	-	-	-	-	-
Residential	-	113,454,287	113,454,287	100.0%	-	121,796,193	121,796,193	100.0%
Self-Direction	-	7,872,418	7,872,418	100.0%	-	7,896,932	7,896,932	100.0%
Shared Living	-	842,239	842,239	100.0%	-	756,346	756,346	100.0%
Other	-	12,998,228	12,998,228	100.0%	-	8,788,873	8,788,873	100.0%
I/DD - Composite	\$ 0	\$ 233,976,886	\$ 233,976,886	100.0%	\$ 0	\$ 231,439,366	\$ 231,439,366	100.0%

Notes:

- The claims data fields used to define service categories is not consistently populated on the MCO encounter data. A hierarchical approach based on available data was used to assign service category to MCO encounters.
- Certain day programs provided by BHDDH for community-based services may be included with center-based day services due to transitioning of T2021 codes in the BHDDH fee schedule.
- See the Methodology section of attached report for additional data caveats and limitations.
- Values have been rounded to the nearest integer.

State of Rhode Island
Office of the Health Insurance Commissioner
2025 Social and Human Service Programs Rate Review
Appendix 2
Annual Expenditures CY 2021 - CY 2023

Service Category	CY 2021				CY 2022				CY 2023			
	MCO	FFS	Composite	% FFS	MCO	FFS	Composite	% FFS	MCO	FFS	Composite	% FFS
Behavioral Health Services												
Acute Stabilization Unit	\$ 1,738,536	\$ 1,527,349	\$ 3,265,885	46.8%	\$ 1,836,982	\$ 1,621,792	\$ 3,458,775	46.9%	\$ 1,612,584	\$ 1,436,364	\$ 3,048,948	47.1%
Assertive Community Treatment	13,529,615	7,175,929	20,705,544	34.7%	13,785,463	9,418,967	23,204,429	40.6%	13,074,471	5,722,335	18,796,806	30.4%
Integrated Health Homes	25,201,687	8,398,552	33,600,239	25.0%	24,688,906	8,572,725	33,261,631	25.8%	23,878,069	8,934,547	32,812,616	27.2%
Crisis Intervention	54,054	54,402	108,456	50.2%	43,982	41,395	85,377	48.5%	48,624	37,327	85,951	43.4%
Intensive Outpatient Programs	627,806	27,267	655,073	4.2%	1,027,008	7,595	1,034,602	0.7%	1,089,426	6,680	1,096,106	0.6%
Mental Health Clubhouse	247,050	217,700	464,750	46.8%	262,950	192,650	455,600	42.3%	276,100	165,900	442,000	37.5%
Mental Health Residential	10,554,653	7,873,990	18,428,643	42.7%	11,217,261	10,164,387	21,381,647	47.5%	11,790,955	5,835,490	17,626,445	33.1%
Peer Recovery Services	160,100	179,081	339,181	52.8%	182,003	177,298	359,301	49.3%	201,602	443,311	644,913	68.7%
Rehabilitation	528,841	3,643,449	4,172,289	87.3%	180,141	4,878,589	5,058,730	96.4%	129,183	4,812,511	4,941,694	97.4%
Substance Use Rehabilitation	20,869,310	699,285	21,568,595	3.2%	19,208,733	625,712	19,834,444	3.2%	18,473,369	701,122	19,174,491	3.7%
SUD Residential	16,042,642	130,820	16,173,462	0.8%	24,194,641	111,706	24,306,347	0.5%	29,395,155	184,121	29,579,276	0.6%
Supported Employment	430,519	239,934	670,452	35.8%	408,757	182,261	591,019	30.8%	468,778	203,851	672,629	30.3%
Therapy / Office Visits / Assessments	59,986,236	1,578,117	61,564,353	2.6%	62,336,553	1,519,573	63,856,126	2.4%	67,161,952	1,673,988	68,835,940	2.4%
Behavioral Health Services - Composite	\$ 149,971,049	\$ 31,745,875	\$ 181,716,924	17.5%	\$ 159,373,379	\$ 37,514,649	\$ 196,888,028	19.1%	\$ 167,600,268	\$ 30,157,547	\$ 197,757,815	15.2%
Children's Services												
Cedar	\$ 296,100	\$ 61,200	\$ 357,300	17.1%	\$ 380,891	\$ 54,900	\$ 435,791	12.6%	\$ 322,305	\$ 57,610	\$ 379,915	15.2%
CRAFT	-	3,191,794	3,191,794	100.0%	-	2,956,234	2,956,234	100.0%	-	4,460,612	4,460,612	100.0%
Early Intervention	7,108,600	3,427,987	10,536,587	32.5%	7,952,617	3,388,868	11,341,485	29.9%	10,830,952	4,213,350	15,044,302	28.0%
Home Visiting and Residential Programs	-	7,065,750	7,065,750	100.0%	-	6,944,957	6,944,957	100.0%	-	10,655,414	10,655,414	100.0%
Home/Center-Based Therapeutic Services	20,928,503	14,218,137	35,146,640	40.5%	29,339,757	10,558,546	39,898,303	26.5%	42,608,982	15,876,452	58,485,434	27.1%
Local Education Agency	-	10,735,048	10,735,048	100.0%	-	11,123,730	11,123,730	100.0%	-	11,490,503	11,490,503	100.0%
Children's Services - Composite	\$ 28,333,204	\$ 38,699,917	\$ 67,033,120	57.7%	\$ 37,673,265	\$ 35,027,235	\$ 72,700,500	48.2%	\$ 53,762,239	\$ 46,753,940	\$ 100,516,179	46.5%
HCBS												
Adult Day	\$ 5,641,129	\$ 4,531,647	\$ 10,172,776	44.5%	\$ 7,175,557	\$ 6,298,297	\$ 13,473,854	46.7%	\$ 8,662,869	\$ 6,398,210	\$ 15,061,080	42.5%
Assisted Living Facility	3,959,539	11,741,869	15,701,409	74.8%	4,088,020	18,000,119	22,088,139	81.5%	4,240,803	20,231,785	24,472,588	82.7%
Case Management	1,333,013	2,805,856	4,138,869	67.8%	1,148,548	3,846,487	4,995,036	77.0%	867,898	5,134,922	6,002,820	85.5%
Day Habilitation	380,710	409,088	789,798	51.8%	361,574	452,066	813,640	55.6%	302,022	413,832	715,854	57.8%
Home Care	40,168,312	54,682,755	94,851,067	57.7%	46,413,396	67,944,287	114,357,683	59.4%	60,216,459	72,618,338	132,834,797	54.7%
Home Health	3,668,167	985,358	4,653,526	21.2%	3,634,550	860,788	4,495,339	19.1%	3,419,025	677,938	4,096,963	16.5%
Home Meal Delivery	138,067	234,991	373,058	63.0%	333,688	362,569	696,257	52.1%	501,938	594,614	1,096,552	54.2%
Hospice	1,362,820	1,466,448	2,829,269	51.8%	1,426,537	1,265,648	2,692,184	47.0%	1,353,305	958,520	2,311,825	41.5%
Independent Provider	-	939,501	939,501	100.0%	-	1,406,617	1,406,617	100.0%	-	1,033,287	1,033,287	100.0%
Self-Directed	-	552,509	552,509	100.0%	-	679,338	679,338	100.0%	244,625	861,500	1,106,125	77.9%
Severely Disabled Nursing Homecare	1,651,489	6,398,188	8,049,677	79.5%	1,536,702	6,437,298	7,974,000	80.7%	2,134,484	5,614,434	7,748,918	72.5%
Shared Living Agency	1,285,868	4,824,890	6,110,758	79.0%	1,527,560	6,247,182	7,774,743	80.4%	1,943,818	6,996,220	8,940,038	78.3%
HCBS - Composite	\$ 59,589,114	\$ 89,573,103	\$ 149,162,217	60.1%	\$ 67,646,132	\$ 113,800,698	\$ 181,446,830	62.7%	\$ 83,887,245	\$ 121,533,600	\$ 205,420,845	59.2%
Intellectual and Developmental Disability Services												
Center-Based	\$ 0	\$ 62,999,981	\$ 62,999,981	100.0%	\$ 0	\$ 76,458,361	\$ 76,458,361	100.0%	\$ 0	\$ 46,876,256	\$ 46,876,256	100.0%
Community Supports	-	40,106,815	40,106,815	100.0%	-	49,550,280	49,550,280	100.0%	-	96,548,531	96,548,531	100.0%
Employment	-	3,986,084	3,986,084	100.0%	-	5,186,196	5,186,196	100.0%	-	11,879,589	11,879,589	100.0%
Professional Services	-	-	-	-	-	-	-	-	-	541,630	541,630	100.0%
Residential	-	131,810,315	131,810,315	100.0%	-	149,973,932	149,973,932	100.0%	-	171,029,914	171,029,914	100.0%
Self-Direction	-	7,987,625	7,987,625	100.0%	-	8,410,317	8,410,317	100.0%	-	7,008,939	7,008,939	100.0%
Shared Living	-	896,781	896,781	100.0%	-	952,786	952,786	100.0%	-	12,049,025	12,049,025	100.0%
Other	-	9,819,625	9,819,625	100.0%	-	11,214,073	11,214,073	100.0%	-	14,057,843	14,057,843	100.0%
I/DD - Composite	\$ 0	\$ 257,607,224	\$ 257,607,224	100.0%	\$ 0	\$ 301,745,944	\$ 301,745,944	100.0%	\$ 0	\$ 359,991,726	\$ 359,991,726	100.0%

Notes:

1. The claims data fields used to define service categories is not consistently populated on the MCO encounter data. A hierarchical approach based on available data was used to assign service category to MCO encounters.
2. Certain day programs provided by BHDDH for community-based services may be included with center-based day services due to transitioning of T2021 codes in the BHDDH fee schedule.
3. See the Methodology section of attached report for additional data caveats and limitations.
4. Values have been rounded to the nearest integer.

Appendix 3: Encounter Procedure Codes

State of Rhode Island
Office of the Health Insurance Commissioner
2025 Social and Human Service Programs Rate Review
Appendix 3
Encounter Specific Procedure Codes

Major Service Category	Detailed Service Category	Encounter Procedure Code	Analogous FFS Procedure Code
HCBS	Home Health	T1030	X0043
HCBS	Home Health	S9131	G0151
HCBS	Home Health	S9129	G0152
HCBS	Home Health	S9128	G0153
HCBS	Home Health	G0299	X0043
HCBS	Shared Living Agency	T2033	S5136
HCBS	Adult Day	S5101	S5102
Behavioral Health Services	Therapy / Office Visits / Assessments	H0047	H0037
Behavioral Health Services	SUD Residential	H0010	H0001 UD, H0004 UD, H0005 UD
Behavioral Health Services	SUD Residential	H0011	H0001 UD, H0004 UD, H0005 UD
Behavioral Health Services	SUD Residential	H0018	H0001 UD, H0004 UD, H0005 UD

Appendix 4: Retired Fee-for-Service Procedure Codes

State of Rhode Island
Office of the Health Insurance Commissioner
2025 Social and Human Service Programs Rate Review
Appendix 4
Retired Fee-for-Service Procedure Codes

Major Service Category	Detailed Service Category	Program Indicator Code	HCPCS	Modifier	Modifier 2	Modifier 3	Modifier 4	End Date
Behavioral Health Services	Therapy / Office Visits / Assessments	MMH015	H0036	HN				9/30/2024
Behavioral Health Services	Therapy / Office Visits / Assessments	MBH015	H2010	TD				9/30/2024
Behavioral Health Services	SUD Residential	MSA010	H0001	UD				9/30/2024
Behavioral Health Services	SUD Residential	MSA010	H0001	UD	U1			9/30/2024
Behavioral Health Services	SUD Residential	MSA010	H0004	UD				9/30/2024
Behavioral Health Services	SUD Residential	MSA010	H0004	UD	U1			9/30/2024
Behavioral Health Services	SUD Residential	MSA010	H0005	UD				9/30/2024
Behavioral Health Services	SUD Residential	MSA010	H0005	UD	U1			9/30/2024
Children's Services	Early Intervention	MEI015	T1016	TF	U2			8/1/2022
Children's Services	Early Intervention	MEI015	T1016	TF	U1			8/1/2022
Children's Services	Early Intervention	MEI010	T1016	TF	U1			8/1/2022
HCBS	Independent Provider	MIP010	T1019					10/20/2023
HCBS	Independent Provider	MIP010	T2022					10/20/2023
HCBS	Independent Provider	MIP010	T2025					10/20/2023
Intellectual and Developmental Disability Services	Professional Services	MBD011	T1002	U6	U1			6/30/2024
Intellectual and Developmental Disability Services	Professional Services	BHD011	T1002	U6	U1			6/30/2024
Intellectual and Developmental Disability Services	Professional Services	MBD011	T1003	U6	U1			6/30/2024
Intellectual and Developmental Disability Services	Community Supports	MBD011	T1005	UJ	U2			6/30/2023
Intellectual and Developmental Disability Services	Other	MBD062	T2003	TG				6/30/2024
Intellectual and Developmental Disability Services	Other	MBD061	T2003	TG				6/30/2024
Intellectual and Developmental Disability Services	Other	MBD011	T2013					8/31/2023
Intellectual and Developmental Disability Services	Shared Living	MBD011	T2017	UD	U2			6/30/2023
Intellectual and Developmental Disability Services	Center-Based	MBD012	T2020	U7				6/30/2023
Intellectual and Developmental Disability Services	Center-Based	MBD012	T2020	U6				6/30/2023
Intellectual and Developmental Disability Services	Center-Based	MBD012	T2020	U5				6/30/2023
Intellectual and Developmental Disability Services	Center-Based	MBD011	T2020	UA				6/30/2023
Intellectual and Developmental Disability Services	Center-Based	MBD011	T2020	U7				6/30/2023
Intellectual and Developmental Disability Services	Center-Based	MBD011	T2020	U6				6/30/2023
Intellectual and Developmental Disability Services	Center-Based	MBD011	T2020	U5				6/30/2023
Intellectual and Developmental Disability Services	Center-Based	MBD011	T2020	TG				6/30/2023
Intellectual and Developmental Disability Services	Center-Based	MBD013	T2021	UA	U1			6/30/2023
Intellectual and Developmental Disability Services	Center-Based	MBD013	T2021	U7	U1			6/30/2023
Intellectual and Developmental Disability Services	Center-Based	MBD013	T2021	TG	U1			6/30/2024
Intellectual and Developmental Disability Services	Center-Based	MBD012	T2021	UA	U1			6/30/2023
Intellectual and Developmental Disability Services	Center-Based	MBD012	T2021	U7	U1			6/30/2023
Intellectual and Developmental Disability Services	Center-Based	MBD012	T2021	U6	U1			6/30/2023
Intellectual and Developmental Disability Services	Center-Based	MBD012	T2021	U5	U1			6/30/2023
Intellectual and Developmental Disability Services	Center-Based	MBD012	T2021	TG	U1			6/30/2024
Intellectual and Developmental Disability Services	Center-Based	BHD011	T2021	TG	U1			6/30/2024
Intellectual and Developmental Disability Services	Center-Based	MBD011	T2021	UA	U1			6/30/2023
Intellectual and Developmental Disability Services	Center-Based	MBD011	T2021	U7	U1			6/30/2023
Intellectual and Developmental Disability Services	Center-Based	MBD011	T2021	U6	U1			6/30/2023
Intellectual and Developmental Disability Services	Center-Based	MBD011	T2021	U5	U1			6/30/2023
Intellectual and Developmental Disability Services	Center-Based	MBD011	T2021	TG	U1			6/30/2024
Intellectual and Developmental Disability Services	Self-Direction	BHD011	T2022	U5				6/30/2023
Intellectual and Developmental Disability Services	Self-Direction	MBD063	T2022	U6				6/30/2023
Intellectual and Developmental Disability Services	Self-Direction	MBD063	T2022	U5				6/30/2023
Intellectual and Developmental Disability Services	Self-Direction	MBD062	T2022	UA				6/30/2023
Intellectual and Developmental Disability Services	Self-Direction	MBD062	T2022	U7				6/30/2023
Intellectual and Developmental Disability Services	Self-Direction	MBD062	T2022	U6				6/30/2023
Intellectual and Developmental Disability Services	Self-Direction	MBD062	T2022	U5				6/30/2023
Intellectual and Developmental Disability Services	Self-Direction	MBD062	T2022	TG				6/30/2023
Intellectual and Developmental Disability Services	Self-Direction	MBD061	T2022	UA				6/30/2023
Intellectual and Developmental Disability Services	Self-Direction	MBD061	T2022	U7	U2			6/30/2023
Intellectual and Developmental Disability Services	Self-Direction	MBD061	T2022	U7				6/30/2023
Intellectual and Developmental Disability Services	Self-Direction	MBD061	T2022	U6				6/30/2023
Intellectual and Developmental Disability Services	Self-Direction	MBD061	T2022	U5				6/30/2023
Intellectual and Developmental Disability Services	Self-Direction	MBD061	T2022	TG				6/30/2023
Intellectual and Developmental Disability Services	Self-Direction	MBD061	T2022	L9				6/30/2023
Intellectual and Developmental Disability Services	Other	MBD011	T2013	UD				8/31/2023
Intellectual and Developmental Disability Services	Center-Based	BHD011	T2021	U5	U1			6/30/2023
Intellectual and Developmental Disability Services	Self-Direction	MBD063	T2022	U7				6/30/2023
Intellectual and Developmental Disability Services	Self-Direction	MBD062	T2022	L9				6/30/2023
Intellectual and Developmental Disability Services	Other	BHD011	T2013					8/31/2023
Intellectual and Developmental Disability Services	Center-Based	MBD012	T2020	UA				6/30/2023
Intellectual and Developmental Disability Services	Center-Based	BHD011	T2021	UA	U1			6/30/2023
Intellectual and Developmental Disability Services	Community Supports	MBD011	T2017	US	UD			6/30/2023
Intellectual and Developmental Disability Services	Community Supports	MBD011	T2017	UR	UD			6/30/2023
Intellectual and Developmental Disability Services	Center-Based	BHD011	T2021	U7	U1			6/30/2023
Intellectual and Developmental Disability Services	Center-Based	MBD013	T2021	U6	U1			6/30/2023
Intellectual and Developmental Disability Services	Self-Direction	MBD061	T2022	U6	U2			6/30/2023
Intellectual and Developmental Disability Services	Self-Direction	BHD011	T2022	U7				6/30/2023
Intellectual and Developmental Disability Services	Self-Direction	MBD062	T2022	U6	U2			6/30/2023



Milliman is among the world's largest providers of actuarial and related products and services. The firm has consulting practices in life insurance and financial services, property & casualty insurance, healthcare, and employee benefits. Founded in 1947, Milliman is an independent firm with offices in major cities around the globe.

[milliman.com](https://www.milliman.com)

© 2025 Milliman, Inc. All Rights Reserved. The materials in this document represent the opinion of the authors and are not representative of the views of Milliman, Inc. Milliman does not certify the information, nor does it guarantee the accuracy and completeness of such information. Use of such information is voluntary and should not be relied upon unless an independent review of its accuracy and completeness has been performed. Materials may not be reproduced without the express consent of Milliman.